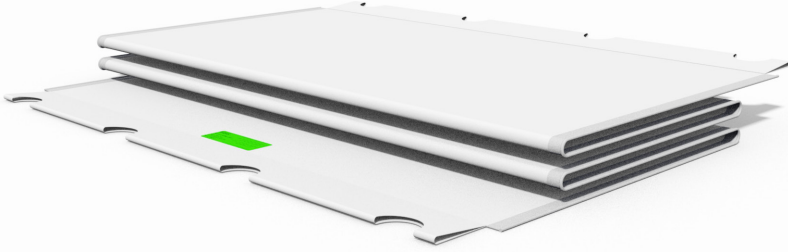


TECHNICAL INFORMATION

PLASTIC SHEETING

TIS17010-



TEST	METHOD	REQUIREMENT
Base Fabric	N/A	PES Polyester
Yarn	N/A	1100/1430Dtex
Weave	N/A	Plain
Threads (w/f)	N/A	7/6.7
Special Treatments	N/A	FR BS 7837 TEST 5438/B2 FR - DIN 4102, B1 - pass BS EN 13501-1 - B, S2, D1 Anti-Yellowing - 3 Years High UV Anti-Mildew

TEST	METHOD	REQUIREMENT
Coating Material	N/A	PVC + Acrylic Lacquer (1)
Total Weight	ISO 3801	610 g/m ²
Tensile Strength (Strip)	ASTM D 751	2600/2300 N/50mm
Tear Resistance	ASTM 2261	356 N
Adhesion (HF Welding)	ASTM D 751	90 N / 50mm
Welding Method	N/A	HF, Hot - Air

ARTICLE	DIMENSIONS	WEIGHT (kg)
CA0110	610gsmx8mm 10.00x2.07m	10.20
CA0115	610gsmx8mm 15.00x2.07m	15.30
CA0120	610gsmx8mm 20.00x2.07m	20.40
CA0125	610gsmx8mm 25.00x2.07m	25.50
CA0130	610gsmx8mm 30.00x2.07m	30.70
CA0135	610gsmx8mm 35.00x2.07m	35.80
CA0140	610gsmx8mm 40.00x2.07m	40.90
CA0145	610gsmx8mm 45.00x2.07m	46.00
CA0210	610gsmx8mm 10.00x2.57m	13.50
CA0215	610gsmx8mm 15.00x2.57m	20.20
CA0220	610gsmx8mm 20.00x2.57m	26.90
CA0225	610gsmx8mm 25.00x2.57m	33.70
CA0230	610gsmx8mm 30.00x2.57m	40.40
CA0235	610gsmx8mm 35.00x2.57m	47.10
CA0240	610gsmx8mm 40.00x2.57m	53.90
CA0245	610gsmx8mm 45.00x2.57m	60.60
CA0310	610gsmx8mm 10.00x3.07m	16.70
CA0315	610gsmx8mm 15.00x3.07m	25.10
CA0320	610gsmx8mm 20.00x3.07m	33.40
CA0325	610gsmx8mm 25.00x3.07m	41.80
CA0330	610gsmx8mm 30.00x3.07m	50.20
CA0335	610gsmx8mm 35.00x3.07m	58.50
CA0340	610gsmx8mm 40.00x3.07m	66.90
CA0345	610gsmx8mm 45.00x3.07m	75.20
CA0410	610gsmx8mm 10.0x1.57m	10.10
CA0415	610gsmx8mm 15.0x1.57m	15.05
CA0420	610gsmx8mm 20.0x1.57m	20.15
CA0425	610gsmx8mm 25.0x1.57m	25.20
CA0430	610gsmx8mm 30.0x1.57m	30.20
CA0435	610gsmx8mm 35.0x1.57m	35.20
CA0440	610gsmx8mm 40.0x1.57m	41.10
CA0445	610gsmx8mm 45.0x1.57m	45.50

ARTICLE	DIMENSIONS	WEIGHT (kg)
CB0110	610gsmx8mm 10.0x1.5m	9.80
CB0115	610gsmx8mm 15.0x1.5m	14.60
CB0120	610gsmx8mm 20.0x1.5m	19.50
CB0125	610gsmx8mm 25.0x1.5m	24.40
CB0130	610gsmx8mm 30.0x1.5m	29.30
CB0135	610gsmx8mm 35.0x1.5m	34.10
CB0140	610gsmx8mm 40.0x1.5m	39.00
CB0145	610gsmx8mm 45.0x1.5m	43.90
CB0210	610gsmx8mm 10.0x2.0m	13.00
CB0215	610gsmx8mm 15.0x2.0m	19.50
CB0220	610gsmx8mm 20.0x2.0m	26.00
CB0225	610gsmx8mm 25.0x2.0m	32.50
CB0230	610gsmx8mm 30.0x2.0m	39.00
CB0235	610gsmx8mm 35.0x2.0m	45.50
CB0240	610gsmx8mm 40.0x2.0m	52.00
CB0245	610gsmx8mm 45.0x2.0m	58.50
CB0310	610gsmx8mm 10.0x2.5m	16.30
CB0315	610gsmx8mm 15.0x2.5m	24.40
CB0320	610gsmx8mm 20.0x2.5m	32.50
CB0325	610gsmx8mm 25.0x2.5m	40.60
CB0330	610gsmx8mm 30.0x2.5m	48.80
CB0335	610gsmx8mm 35.0x2.5m	56.90
CB0340	610gsmx8mm 40.0x2.5m	65.00
CB0345	610gsmx8mm 45.0x2.5m	68.53
CB0410	610gsmx8mm 10.0x3.0m	18.30
CB0415	610gsmx8mm 15.0x3.0m	27.45
CB0420	610gsmx8mm 20.0x3.0m	36.60
CB0425	610gsmx8mm 25.0x3.0m	45.75
CB0430	610gsmx8mm 30.0x3.0m	54.90
CB0435	610gsmx8mm 35.0x3.0m	64.05
CB0440	610gsmx8mm 40.0x3.0m	73.20
CB0445	610gsmx8mm 45.0x3.0m	82.35

The information provided is based on prevailing legislation and/or testing. DESSA Ltd reserves the right to make technical changes, users should ensure that only current revisions of this Technical Information Sheet are used. The published data refers to original genuine DESSA materials only. © DESSA Limited. No unauthorised use, copy or disclosure is to be made.