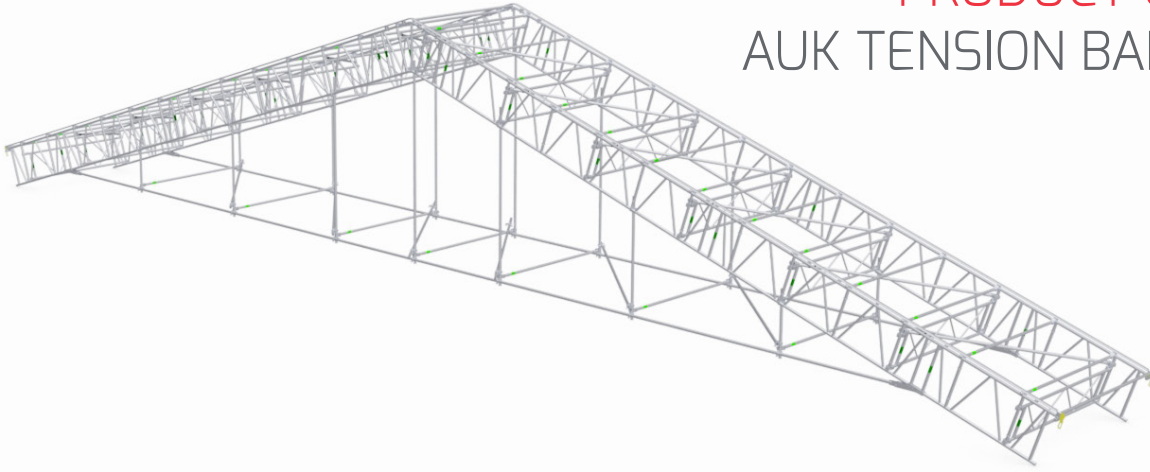


PRODUCT GUIDANCE

AUK TENSION BAR SYSTEM

PDG17005-



PART RECOGNITION - MAIN COMPONENTS

PART #	DESCRIPTION	WEIGHT (KG)
TF0018	ALTRIX TENSION BAR CONNECTOR PLATE	1.79
HF2099	ALTRIX TENSION BAR END PIECE	9.80
TF1902	TENSION TUBE 2X18 DEGREES	7.11
TF2853	TENSION TUBE 3X18 DEGREES	10.66
TF5706	TENSION TUBE 6X18 DEGREES	21.32

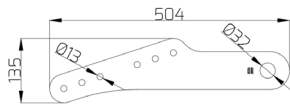
ALL PARTS IN S355 STEEL, WITH A HDG FINISH

PART RECOGNITION - CONNECTIONS

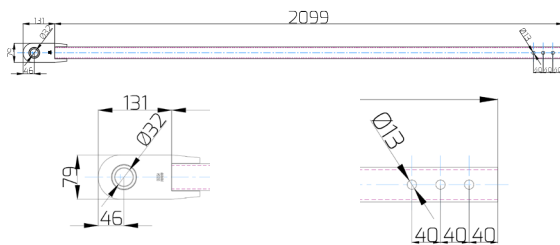
PART #	DESCRIPTION	WEIGHT (KG)
AF0004	LOCKING PIN 30MM	0.55
AF0005	R CLIP	0.02
B50005	BEAM SPIGOT ALT 6H5	0.72
AF0001	QUICK RELEASE PIN M12X60	0.07
AF0006	HEX BOLT M12X90	0.09
AF0021	HEX LOCK NUT M12	0.02

PART DIMENSIONS

TF0018:



HF2099:

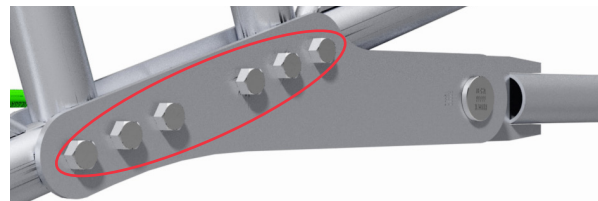


TF1902, TF2853, TF5706:



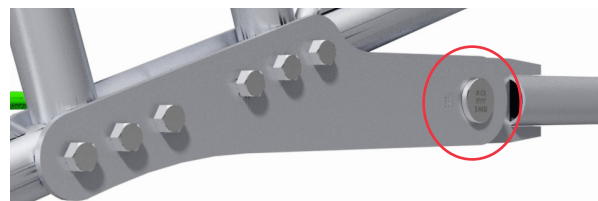
CONNECTION DETAILS

CONNECTOR PLATE TO BEAM LINE CONNECTION:



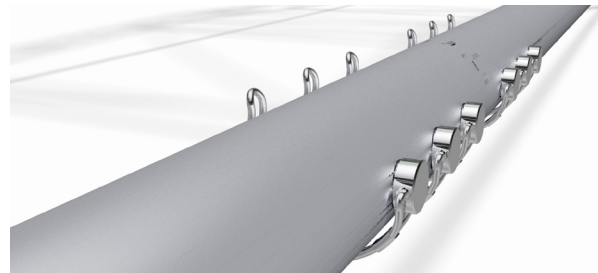
6NO. AF0006
6NO. AF0004
REQUIRED

END PIECE TO CONNECTOR PLATE CONNECTION:



1NO. AF0004
1NO. AF0005
REQUIRED

TUBULAR MEMBER CONNECTION:



1NO. B50005
6NO. AF0001
REQUIRED

PERMISSIBLE LOADING CAPACITIES

MAXIMUM TENSION (6 BOLT CONNECTION)	77.45kN
MAXIMUM TENSION (4 BOLT CONNECTION)	54.21kN
MAXIMUM COMPRESSION (1M C/C)	33.98kN
MAXIMUM COMPRESSION (2M C/C)	32.43kN
MAXIMUM COMPRESSION (3M C/C)	15.16kN