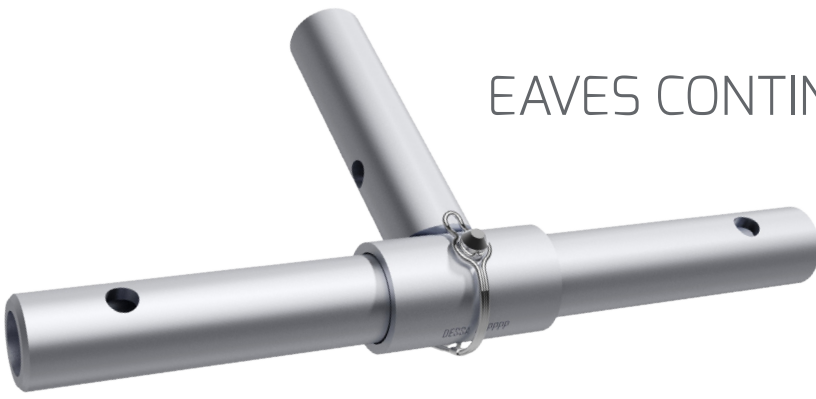


PRODUCT GUIDANCE

EAVES CONTINUOUS TUBE CONNECTOR

PDG17004-



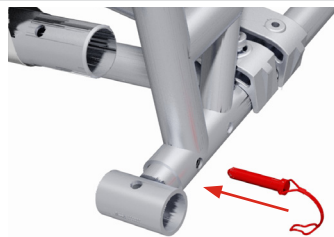
DESCRIPTION AND KEY BENEFITS

New from DESSA is the eaves continuous tube connector - a lightweight, all-aluminium component that provides a consistent tensioning point for all roof sheets in a project. This part comprises of two elements; sleeve and spigot, and is integrated into any DESSA roofing system using AF0001 quick release pins. The spigot element contains multiple holes, which provide flexibility between connections of an end bay or an intermediate bay. This component perfectly houses the DESSA modular sheet tensioning bars (see PDG17003) to create a consistent sheet tensioning point.

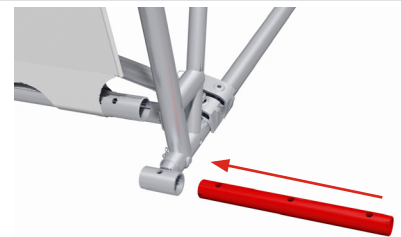
INSTALLATION INSTRUCTIONS



1) Insert sleeve element into bottom chord of beam.

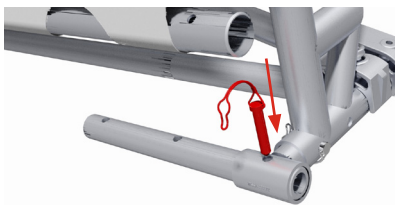


2) Secure sleeve to bottom chord of beam using 1no. AF0001 quick release pin.

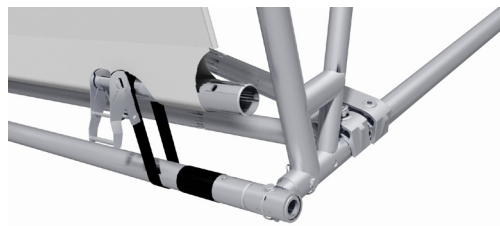


3) Insert spigot element through the sleeve element. Align appropriate hole to sleeve:

- Central hole for intermediate roof bays.
- End hole for end roof bays.



4) Secure spigot to sleeve using 1no. AF0001 quick release pin.



5) Align modular sheet tensioning bar to exposed spigot. Orientate to next beam line and align to next spigot.

TECHNICAL INFORMATION

Part Number: UA0026

Weight: 1.11kg

Material: Aluminium

Dimensions: 198mm L x 380mm W