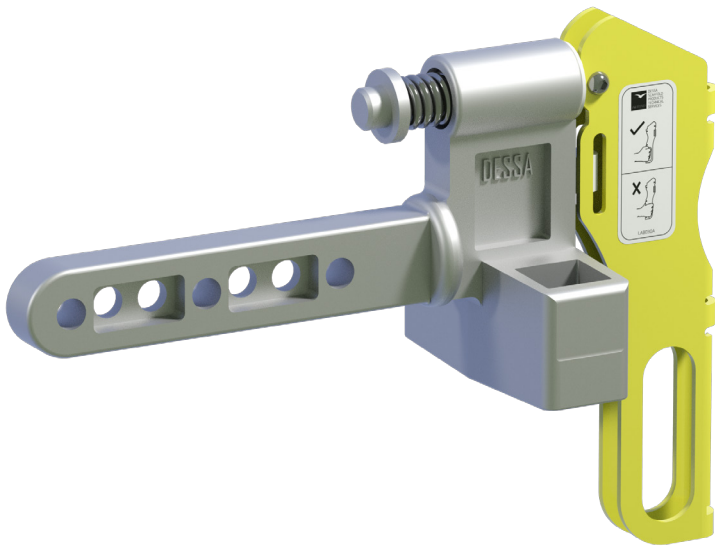


PRODUCT GUIDANCE

TRACK COMPRESSOR

PDG16008-

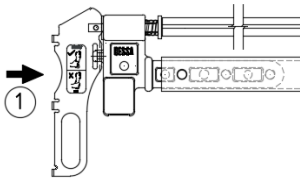


DESCRIPTION

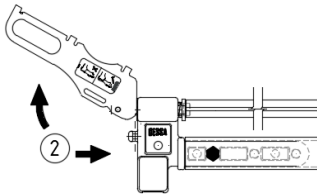
The new Track Compressor, working in conjunction with the new roller brace, provides numerous benefits against previous releases. Its new, distinctive design is an improvement practically and aesthetically.

INSTALLATION

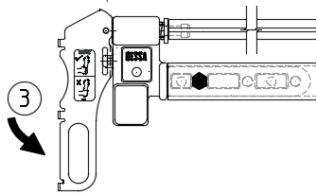
- 1) Insert track compressor into end of beam line, engaging top section with sheet tracking profile.



- 2) Pull handle into upwards position, to engage further into the sheet track. Connect to beam line using AF0001 quick release pin.



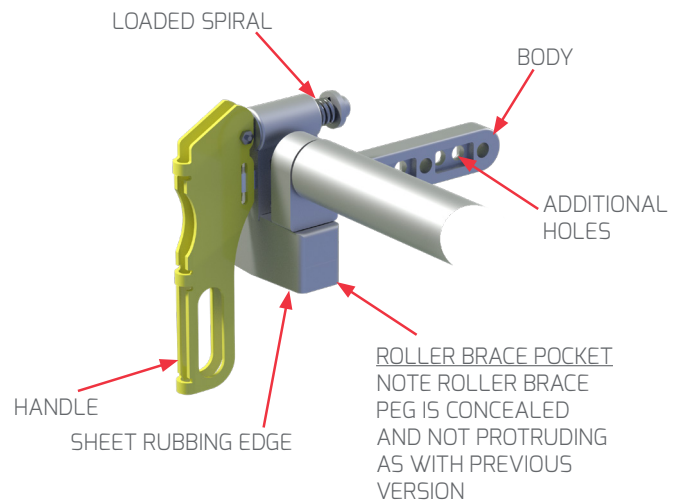
- 3) Tighten the M12 bolts situated below the track spigot using a 19mm flat spanner, to press the bottom profile to the sheet tracking, securing the joint. Repeat for all joints.



- 4) For detailed instructions, refer to Assembly Guidance Note ASG14002.

TECHNICAL INFORMATION

Product Code:	UA0005
Description:	Track Compressor
Product Weight:	1.09kg



BENEFITS

- Hole configuration allows for connection across all beam ranges.
- User friendly handle for ease of operation.
- Integrated housing for roller braces.
- 25kg increased to 100kg compressive force exerted along keder track, ensuring unrivalled joint stability regardless of span and climatic conditions.

The information provided is based on prevailing legislation and/or testing. DESSA Ltd reserves the right to make technical changes, users should ensure that only current revisions of this Product Guidance are used. The published data refers to original genuine DESSA materials only. © DESSA Limited. No unauthorised use, copy or disclosure is to be made.