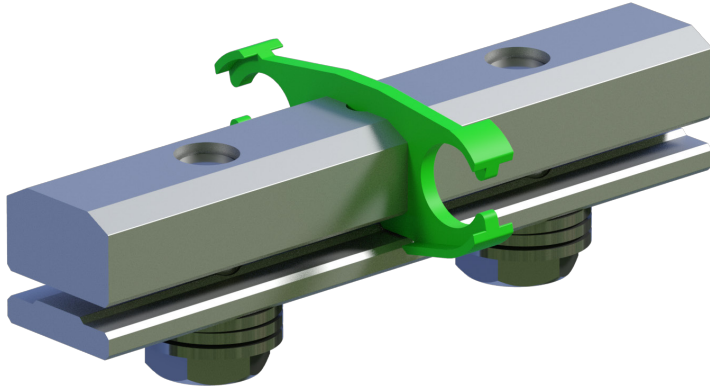


PRODUCT GUIDANCE

SOLID ALLOY TRACK SPIGOT

PDG16007-



DESCRIPTION

The new solid alloy track spigot comprises of two aluminium extrusions, custom designed to fit perfectly with DESSA sheet tracking. Once secured, the solid track spigot offers unrivalled joint stability in turn minimising any possibility of water ingress and minimising frictional resistances during sheet installation. To ensure the product is tightened correctly, we use regular bolts, all that is needed is a 19mm flat spanner, and the perfect tracking joint is achieved.

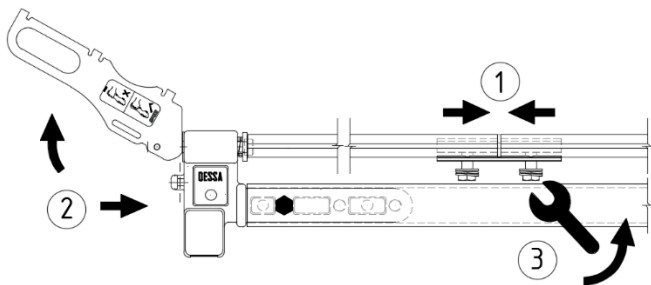
ARTICLE	DESCRIPTION
UA0021	Alloy track spigot c/w gasket, 0.26kg
UA0022	PU gasket, 0.03kg

REPLACEABLE GASKET
UA0022



INSTALLATION

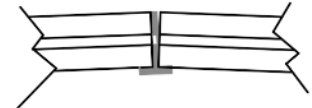
- 1) Insert track spigot into sheet tracking profile, ensuring the top profile is aligned and the bottom profile is sitting below the sheet track. Repeat for all joints.
- 2) Install track compressor UA0005 and ensure force is being exerted along the sheet track.
- 3) Tighten the M12 bolts situated below the track spigot using a 19mm flat spanner, to press the bottom profile to the sheet tracking, securing the joint. Repeat for all joints.
- 4) For detailed instructions, refer to Assembly Guidance ASG14002.



IMPROVEMENTS

- More stable connection between lengths of sheet track under all climatic conditions.
- Stops all track displacement:

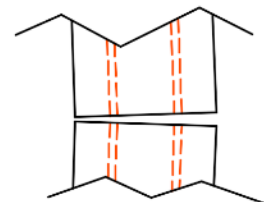
Vertically (due to wind uplift and snow)



Axially (due to wind blowing across roof)



Laterally (due to side-on wind)



- New, replaceable gasket fitted with alignment ribs.
- Additional stiffness ensuring that the gaskets are perfectly aligned with the keder track.
- Longer life span.

The information provided is based on prevailing legislation and/or testing. DESSA Ltd reserves the right to make technical changes, users should ensure that only current revisions of this Product Guidance are used. The published data refers to original genuine DESSA materials only. © DESSA Limited. No unauthorised use, copy or disclosure is to be made.