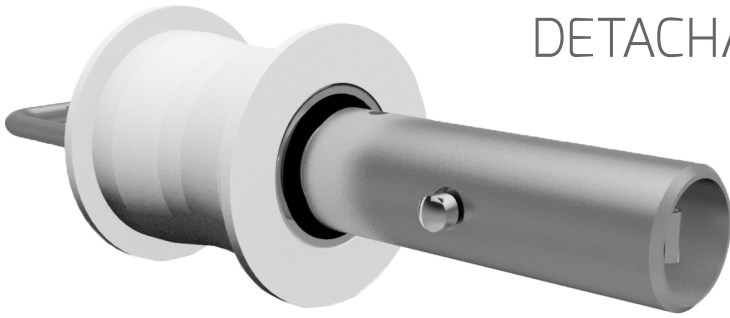


DETACHABLE SHEET PULLING WHEEL PDG16002A



DESCRIPTION

DESSA's new detachable sheet pulling wheel has been designed to ease the process of installing and terminating keder roof sheets. This new element will replace the existing sheet pulling bar to provide a compact and more logistically suitable solution to onsite sheet installation activities. Works with new modular colour coded sheet tensioning bar to suit bay widths (see PDG17003).

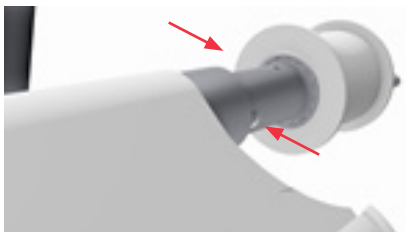
Part Number: UA0025

Product Weight: 1.5kg

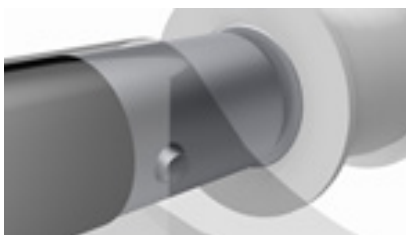
INSTALLATION



1) Insert colour coded sheet tensioning bar into sheet pocket.



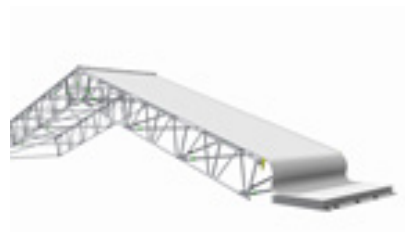
2) Offer sheet pulling wheel to end of sheet tension bar. Depress spring pins to insert into sheet tensioning bar.



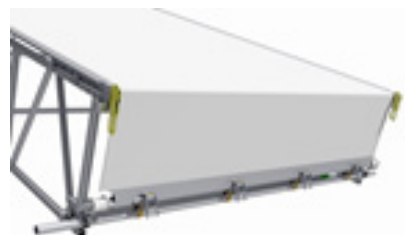
3) Engage spring pins with the integrated holes of the sheet tensioning bar.



4) Connect rope to sheet tensioning bar and offer assembly to beam line, aligning wheel and sheet keder to the sheet track.



5) Pull sheet through the roof bay using pre-installed ropes.



6) Remove Sheet Pulling Wheels. Terminate sheet using relevant fittings. Proceed to the next bay.

KEY BENEFITS

- No need to cycle heavy pulling bar to each bay.
- Works with an integrated sheet tensioning bar, bespoke to each bay size.
- Lightweight and aesthetic, with a mounted handle, to ease site logistics.
- Integrated pin in shaft to allow for ease of engagement into sheet tensioning bar.
- Nylon wheel on double bearings provides a fluid and seamless action when pulling sheets.