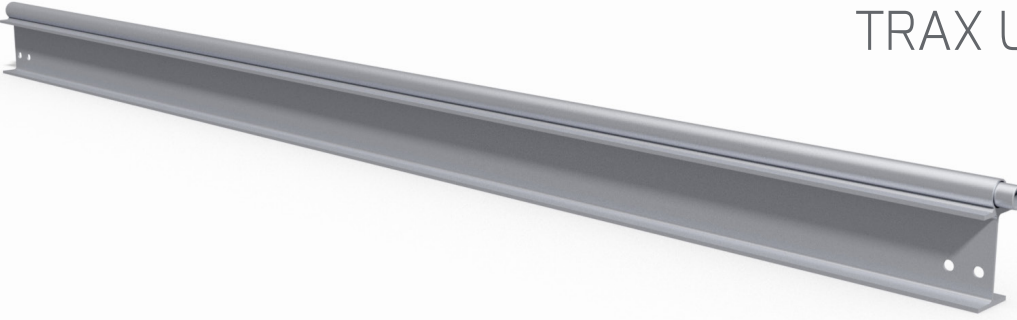


TECHNICAL INFORMATION

TRAX UNIVERSAL BEAM

TIS17028-



ARTICLE	DESCRIPTION	WEIGHT (kg)	MATERIAL GRADE	SURFACE FINISH
BR2000	TRAX UB 2M	41.4	EN 10027:S275 STEEL	HOT DIP GALVANIZED
BR3000	TRAX UB 3M	62.3		

MATERIAL PROPERTIES		
YIELD STRESS	ULTIMATE STRESS	YOUNGS MODULUS OF ELASTICITY
275 N/mm ²	430 N/mm ²	210 kN/mm ²

SECTION	CONNECTOR
<p>* SECTION PROPERTIES ASSUMED OF 152x89x16 UB</p>	

MAX PERMISSIBLE LOADS		PERMISSIBLE LOADS					
		L (m)					
			MAX PL (y)	MAX PL (z)	MAX UDL (y)	MAX UDL (z)	F (PER BEAM LINE)
By	20.66 kNm	0.5	165.27	41.80	661.09	167.19	2.81
Bz	5.22 kNm	1	82.64	20.90	165.27	41.80	5.63
		1.5	55.09	13.93	73.45	18.58	8.44
		2	41.32	10.45	41.32	10.45	11.25
SHEAR	78.71 kN	2.5	33.05	8.36	26.44	6.69	14.06
		3	27.55	6.97	18.36	4.64	16.88

The information provided is based on prevailing legislation and/or testing. DESSA Ltd reserves the right to make technical changes, users should ensure that only current revisions of this Technical Information Sheet are used. The published data refers to original genuine DESSA materials only. © DESSA Limited. No unauthorised use, copy or disclosure is to be made.