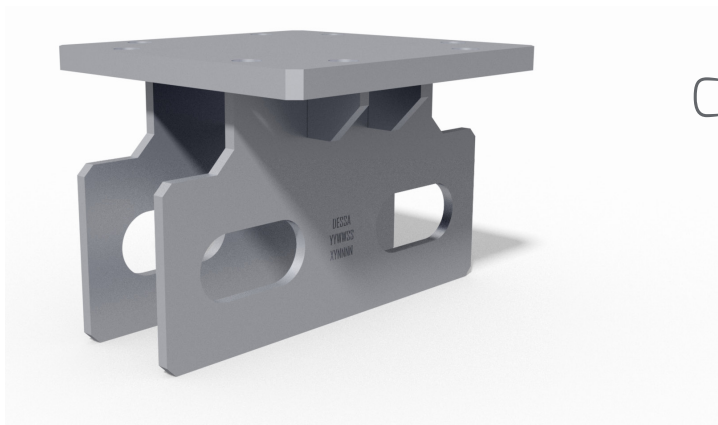


PRODUCT GUIDANCE

CASTOR TOP PLATE 0 DEGREES

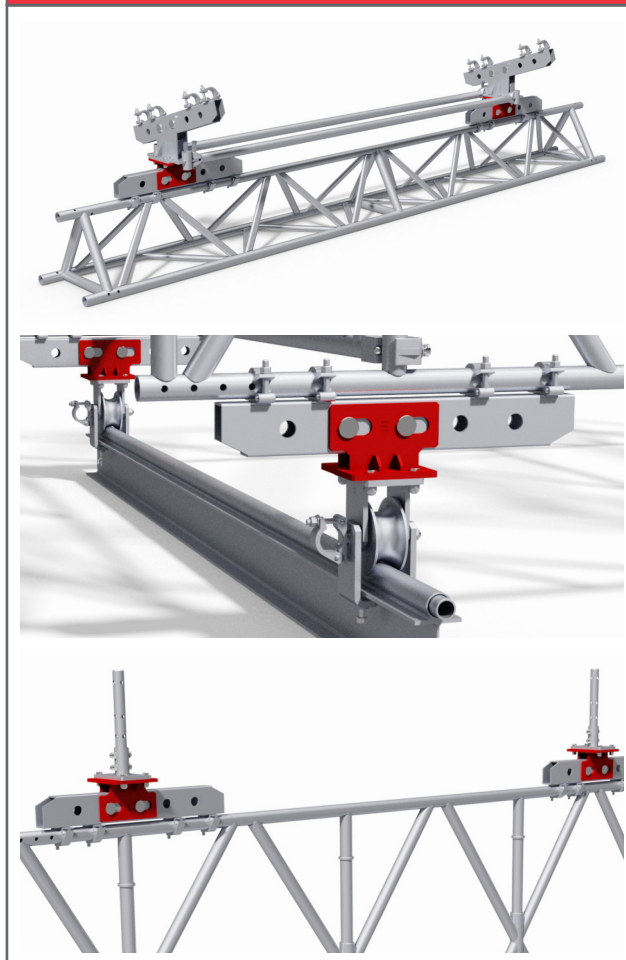
PDG17001-



DESCRIPTION AND KEY BENEFITS

The 0 degree top plate offers a vast range of application possibilities, working in conjunction with a series of standard parts already within the DESSA range of products. The 0 degree castor top plate enables loads to be transferred to node points and helps to distribute the loads evenly. Roof and beam connection to scaffolds can be made quickly and efficiently using a minimum number of parts.

APPLICATIONS



1) Used in conjunction with 0.7m bearer (UA0011) and 18 degree castor top plate (UA0028) in order to plan and space a roof off header beams / tri-beam arrangements.

2) Used in conjunction with 0.7m bearer (UA0011) and anti-uplift castor (AA0002) to provide horizontal support for mobile crash decks or similar.

3) Used in conjunction with 0.7m bearer (UA0011) and various other DESSA top plates, in order to base out scaffolds off beam spans.

TECHNICAL INFORMATION

Part Number: UA0000

Weight: 5.0kg

Dimensions (mm): 220l x 172w x 136h

Finish: Galvanised