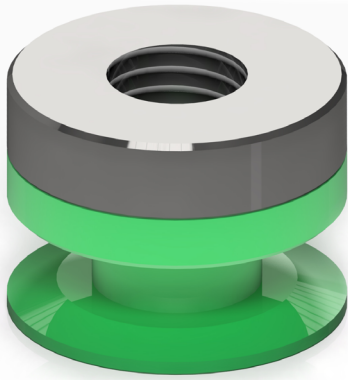


# PRODUCT GUIDANCE

## TWO PART BUTTON NUT

### PDG16005C



### DESCRIPTION AND KEY BENEFITS

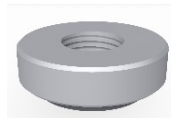
DESSA have introduced a new two part button nut. This improved part shall be fitted to all braces and brace frames going forward. The two part nut features a steel top nut and a combined moulded washer and spacer lower part. The two part button nut significantly improves tracking installation, reduces track wear and is fully compatible with all earlier brace types.

Improvements:

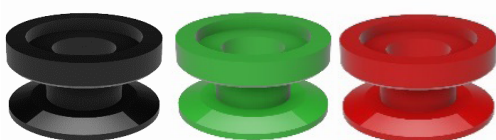
- Reduction on wear to sheet tracking, increasing life span.
- Reduces significantly the effect of unaligned side by side button nuts.
- Silent in operation, the track no longer rattles on the steel button nuts under wind actions.
- Longer life span, previous spacer and washer replaced with a rust free composite part.
- Brace length identification through colour coding.
- Smoother installation of sheet track.

### COMPONENTS

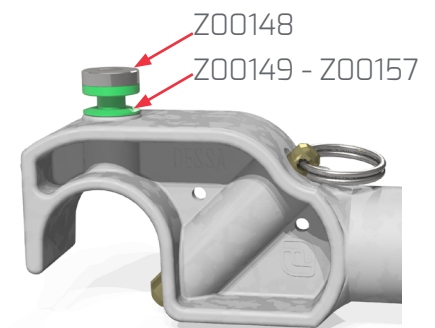
- Z00148, Steel top nut, 0.007kg



- Z00149- Z00157, Composite Spacer, 0.002kg



Part Code	Colour
Z00149	1.57m
Z00150	2.07m
Z00151	2.57m
Z00152	3.07m
Z00153	1.0m
Z00154	1.5m
Z00155	2.0m
Z00156	2.5m
Z00157	3.0m



### UPGRADING OLD BRACE

It is possible to upgrade all previous brace types by manually removing the existing steel button nuts and replacing them with DESSA repair parts.

For full installation details see:

Quick Start Guide QSG17001 - link:

<http://www.dessa.co.uk/wp-content/uploads/2017/04/QSG17001.pdf>

DESSA VidAssist instructional video - link:

<http://www.dessa.co.uk/wp-content/uploads/2017/04/DVA17000EN.mp4>